

WE HAVE FUN..

Children are free to choose their own activities during the first part of the session. After milk and a healthy snack we have a group activity.

CREATIVE... painting, junk building, play dough and sticking involves learning and achievement.



PRETEND ... Children love to dress up and be someone else. Their imagination can be stretched whilst playing in the pretend home corner, post office, hospital, green grocers or hairdressers etc.

CONSTRUCTIONAL ... Lego, jigsaws, bricks, threading develops coordination and skills and the ability to match shapes and colour. Using such toys, children learn the basics of mathematics.



DISCOVERY ... Books and stories help develop imagination and extend the child's experience of the world. In dancing, singing and playing musical instruments children can express themselves. Smells and tastes are encouraged by our cooking activities.



NATURAL MATERIALS ... children handle sand and water both outside and inside and learn what such materials do.



ACTIVE PLAY ... healthy children have lots of energy and need opportunities to crawl, climb and balance to help muscles and bones develop.



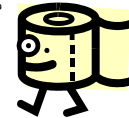
We also have an 'interest table' each week and children are encouraged to contribute items towards the weekly theme - you will find the weekly themes on your calendars.

ESTABLISHED AND VERY SUCCESSFUL FOR OVER 40 YEARS

We are a long established facility where children enjoy the opportunity to learn through play using a wide range of toys and equipment, encouraged by experienced, enthusiastic and friendly staff.

TOILET TRAINING

Although it is preferable children are out of nappies when starting pre-school, we realise there is no 'magic button' and some children will not be quite ready to use the toilet themselves. The staff would ask that children are put in 'pull-ups' for the sessions duration.



TIMETABLES AND FEES SESSIONS

Monday, Wednesday, Thursday and Fridays 9.00 - 12.55 a.m.

Tuesdays 9.00 - 12.00 a.m.

FEES

Both mornings and afternoons should be covered by your vouchers from Brighton and Hove Council and Lewes Councils.

Maureen and the staff will be very happy to help you with more information on grants and how to claim them.

- * Priority is given to children not attending any other local pre-school.



HOW OUR GROUP IS ORGANISED

We are a community group with a charity status and are registered with Ofsted and Social Services. At the Annual General Meeting every July, a Committee is elected by parents, that administers employment of the staff, fund raising and compliance with any regulations laid down by the government.

Our group is also a member of the Pre-School Learning Alliance, which is a national organisation governing quality of care at local pre-schools. Dean's Meetings are also regularly attended either by a member of staff or committee member. These are held to co-ordinate under 5 groups in Saltdean, Rottingdean, Woodingdean & Ovingdean.

We are also members of Special Needs Intergrated Playgroups who give advice, help and support to promote the integration of children with special needs into pre-schools.



OFSTED INSPECTION

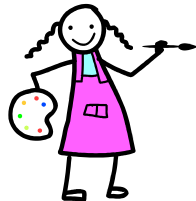
We were inspected by OFSTED in July 2007
A full copy of the latest report is available on request or on the internet at www.ofsted.gov.uk listed under LEA.

SETTLING YOUR CHILD INTO PRESCHOOL

Joining a Pre-school is a very big step for a small child. It may be the first time they have been in such a large room, met so many adults and children, and heard so much noise and bustle. We hope you will have visited us before the first day and will therefore be a little familiar with everything. They may feel shy about trying the toys and activities and it may be sometime before they are prepared to join in with other children. Most newcomers play beside other children rather than with them. When they do start playing together there may be squabbles. They need to learn to take turns and share and they will learn to enjoy each others company too. Each child is an



individual and reacts differently to separation, so discuss your child with the Supervisor. Please be prepared to stay with them for a while should they become too distressed. It might take several sessions and even longer before they feel confident enough to let you go. All the staff will endeavor to make this transition as easy as possible. Chat with your child about the group, other children, the staff and toys etc. Most children settle happily in a week or two. Just occasionally a child will take a little longer to settle. Please do not worry. It is quite normal and your patience will be rewarded as they become confident. Once you have decided the time is right to leave, a quick firm good-bye is best, and always tell a member of staff you are leaving. Sometimes there are tears when you leave-these usually stop within a few minutes, but if this is not the case, or your child becomes distressed during the session, we will contact you.



GENERAL INFORMATION ABOUT OUR PRE-SCHOOL

• TELEPHONE

Please do not hesitate to call if you have any enquiries. Our number is 307973.



• REFRESHMENTS

Milk and healthy snacks are provided for the children during sessions. We do not encourage children to bring flasks unless they are allergic to milk. A cup of water is offered as an alternative.

• SCHOOL LIAISON

We have a very close relationship with Saltdean Primary School and the majority of our children will move onto this school. Frequent visits are arranged for the older children to ensure a smooth transition from Pre-school to 'big' school.



• LUNCH TIMES

Please put your child's lunch in a named box. It is helpful if oranges, apples etc. are peeled and wrapped, that spoons are provided for yoghurts and that no sweets or fizzy drinks are

ST NICHOLAS PRE-SCHOOL

St Nicholas Church Hall
Saltdean
Vale, Saltdean
Brighton, East Sussex
BN2 8AG.

Tel: 307973

Regd Ch No: 1028876

www.
stnicholaspreschool.
org

ON REGISTERING....

You will receive a 'Welcome Pack' with detailed information about the pre-school, our last newsletter which comes out on the first day of each half term, and you will be encouraged to buy your child a school sweatshirt which the children are proud to wear (and protects clothes from glue, paint etc..).

St Nicholas Pre-School

2 TO 5 YEARS



INFORMATION FOR NEW PARENTS

www.stnicholaspreschool.org

01273 307973

(session time only)